

## Lining Techniques... Skirt Linings Made Easy

The **Lining** is a separately assembled inner garment layer designed to finish the inside, and to protect the shape of the garment. The process is easy and takes very little extra time during construction. The instructions given below are for a "free-hanging" or drum lining.

### Steps: Purchasing and preparing lining

1. Refer to the skirt pattern envelope for the amount of fabric to purchase. Unless the garment to be lined is extremely full or circular, purchase the same amount of fabric called for on the pattern envelope. [When skirt is full or circular, the lining may be made smaller than the skirt depending on the fabric and style.]
2. Preshrink lining according to the method (dryclean or laundering) to be used when garment is complete. Straighten fabric piece and make it thread perfect along the crosswise edges in preparation for cutting.

### Preparing skirt for lining

Cut out garment. Sew seams and fit. Press seams. Apply zipper. **DO NOT APPLY WAISTBAND.** [It is sometimes recommended that the seams be stitched slightly deeper than the usual seam allowance so that the strain from sitting is controlled by the lining.]

### Constructing and applying lining

1. Using the skirt pattern for your lining pattern, lay out pieces, and cut lining. Transfer all pattern markings for darts, etc. Stitch and press seams and/ or darts as required, leaving open seam/area where zipper is located.

Press and finish seams as necessary. Pinking is often recommended for lining fabric as seams are turned to the inside and receive little friction from wear. (Figure 1)



Figure 1

2. With skirt turned inside out, slip lining shell over skirt. Wrong sides of the lining will be facing wrong sides of the skirt.

Match/line up seams and/or darts. Pin along waistline seam. Along zipper opening, fold lining fabric under approximately  $\frac{1}{8}$  inch beyond zipper teeth exposing zipper.

Machine stitch (basting or regulation)  $\frac{1}{2}$  inch from edge along waistline seam through lining and skirt. (Fig. 2)

3. With raw edges of lining turned in around zipper, slip-stitch lining to zipper tape. (Fig. 3)

Apply waistband. Press.

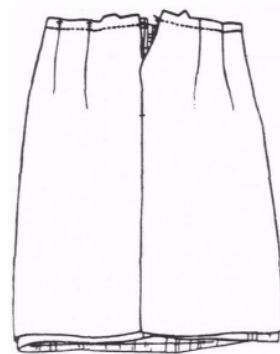


Figure 2

4. Mark skirt length and prepare hem according to type of fabric and skirt style.

Turn up lining 1 inch above bottom edge of skirt hem. Press.

Adjust depth of lining hem according to style of garment (approximately 1 to 2 inches for slim skirt; refer to FCS2-320, **HEMS** for additional information).

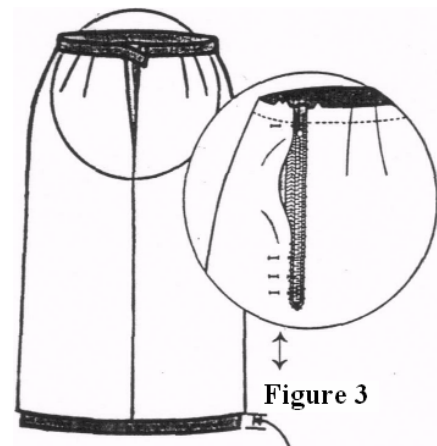


Figure 3

ONE INCH

### **Suggested lining hems:**

- Turn raw edge of lining under approximately  $\frac{1}{4}$  inch and machine stitch in place. (Fig. 4)
- Turn raw edge of lining under approximately  $\frac{1}{4}$  inch and slipstitch in place. (Fig. 5)
- Turn raw edge of lining under approximately  $\frac{1}{4}$  inch and stitch with three rows of stitching approximately  $\frac{1}{4}$  inch apart. (Fig. 6)

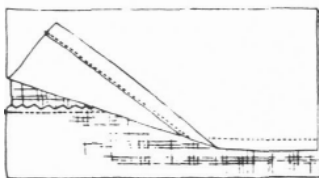


Figure 4

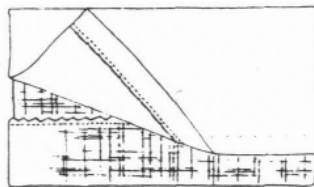


Figure 5

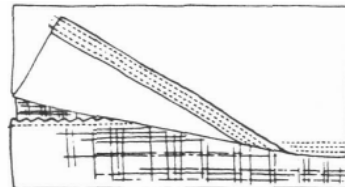


Figure 6

Linda M. Heaton, Ph.D.  
Retired Clothing & Textiles Specialist  
University of Kentucky

Marjorie M. Baker  
Extension Associate for Textiles and Clothing  
Revised 9/2006

Educational programs of Kentucky Cooperative Extension serve all people regardless of race, color, age, sex, religion, disability, or national origin.