



COOPERATIVE EXTENSION SERVICE

UNIVERSITY OF KENTUCKY • COLLEGE OF AGRICULTURE

Trees, Shrubs, Ground Covers, & Vines Suitable for Kentucky Landscapes

M.L. Witt, L.J. Nash, W.M. Fountain, R.E. McNiel



University of Kentucky
Horticulture Department

The following lists should serve as a start if you are interested in growing plants in Kentucky. This publication does not attempt to single out plants for wet vs. dry areas, sunny vs. shady areas, drought resistance, pest resistance or even cold resistance. This publication's purpose is simply to list plants that perform adequately in Kentucky. No plant is perfect in every respect. In fact, most plants have some undesirable characteristics. Only the names of plant materials are given. Consult books available in libraries and bookstores for more information about how to grow and identify these plants.

These plant lists are by no means exhaustive; other equally fine trees and shrubs are on the market. Your local nursery owner or garden center operator is an excellent resource person for new plants as well as tried-and-true plants.

Frequently the same plant is known by different common names, or entirely different plants are known by the same common name. When possible, it will be beneficial to specify plants by the scientific or Latin name. This will help to ensure that you get exactly what you want.

Some excellent woody plant material books are:

Bridwell, Ferrell M. *Landscape Plants, Their Identification, Culture and Use*. Delmar Pub. Co., NY. 1994.

Dirr, Michael, *Manual of Woody Landscape Plants*. Stipes Publishing Co., 4th edition. 1990.

Flint, Harrison L., *Landscape Plants for Eastern North America*. John Wiley & Sons. 1983.

Frederick, W. H., *100 Great Garden Plants*. Timber Press, Portland, OR. 1986.

Krussmann, Gerd (Translated by Michael Epp), *Manual of Cultivated Broadleaved Trees and Shrubs* (three volumes) and *Manual of Cultivated Conifers*. Timber Press, Portland, OR. 1977.

Odenwald, N.G., and J.R. Turner, *Plants for the South: A Guide for Landscape Design*. Claitor's Pub. Div., Baton Rouge.

Phillips, Roger, *A Photographic Guide to More Than 500 Trees of North America and Europe*. Random House, NY. 1978.

Poor, Janet, *Plants That Merit Attention*. Timber Press, Portland, OR. 1984.

Taylor, Norman, *Taylor's Guide to Ground Covers, Vines and Grasses*. Houghton Mifflin Co. 1987.

Taylor, Norman, *Taylor's Guide to Shrubs*. Houghton Mifflin Co. 1987.

Taylor, Norman, *Taylor's Guide to Trees*. Houghton Mifflin Co. 1988.

Wharton, Mary E. and Roger W. Barbour, *Trees and Shrubs of Kentucky*. The University Press of Kentucky. 1973.

Tall Deciduous Trees

(over 50 ft high when mature)

(*Plants which are fine for western and southern Kentucky but not central, eastern and northern parts of the state.)

Scientific Name (Common Name)

Acer x freemanii (Hybrid Maple)

'Autumn Blaze'
'Celebration'
'Marmo'
'Morgan'
'Scarlet Sentinel'

Acer platanoides (Norway Maple)

'Cleveland'
'Columnare'
'Crimson King'
'Deborah'
'Emerald Luster'
'Emerald Queen'
'Parkway'
'Royal Red'
'Schwedleri'
'Summershade'
'Superform'

Acer pseudoplatanus (Sycamore Maple)

Acer rubrum (Red Maple)

'Armstrong'
'Autumn Flame'
'Bowhall'
'Columnare'
'Edna Davis'
'Gerling'
'Karpick'
'Northwood'
'October Glory'
'Red Skin'
'Red Sunset'

Acer saccharum (Sugar Maple)

'Bonfire'
'Caddo'
'Commemoration'
'Columnare'
'Green Mountain'
'Legacy'
'Steeple'TM
'Sweet Shadow'

Acer saccharum sub. sp. nigrum (Black Maple)

Aesculus flava (Yellow Buckeye)

Alnus glutinosa (Black or European Alder)

'Lacinata'

Cercidiphyllum japonicum (Katsura Tree)

Corylus colurna (Turkish Filbert)

Eucommia ulmoides (Hardy Rubber Tree)

Fagus sylvatica (European Beech)

'Asplenifolia'
'Atropurpurea'
'Atropurpurea Pendula'
'Laciniata'
'Pendula'
'Riversii'
'Rohanii'
'Roseo-Marginata'
'Tricolor'

Fraxinus americana (White Ash)

'Autumn Purple'
'Autumn Applause'
'Champaign County'
'Rosehill'
'Skyline'

Fraxinus excelsior (European Ash)

'Hessei'

Fraxinus pennsylvanica (Green Ash)

'Bergeson'
'Emerald'
'Marshall's Seedless'
'Newport'
'Patmore'
'Summit'
'Urbanite'

Ginkgo biloba (Ginkgo)

'Autumn Gold'
'Fastigiata'
'Sentry'

Gleditsia triacanthos (Honeylocust)

'Green Glory'
'Imperial'
'Majestic'
'Moraine'
'Shademaster'
'Skyline'
'Sunburst'

Gymnocladus dioica (Kentucky Coffee Tree) (use male trees only)

Larix decidua (European Larch)

Larix kaempferi (Japanese Larch)

Liquidambar styraciflua (Sweetgum)

'Festival'
'Rotundiloba'

Liriodendron tulipifera (Tulip Tree, Tulip Poplar)

Magnolia acuminata (Cucumber tree Magnolia)

Metasequoia glyptostroboides (Dawn Redwood)

'National'

Nyssa sylvatica (Tupelo, Black Gum)

Platanus x acerifolia (London Planetree)

'Bloodgood'
'Columbia'
'Liberty'
'Yarwood'

Quercus acutissima (Sawtooth Oak)

Quercus alba (White Oak)

Quercus bicolor (Swamp White Oak)

Quercus coccinea (Scarlet Oak)

Quercus dentata (Nuttall Oak, Swamp Oak)

Quercus imbricaria (Shingle Oak)

Quercus macrocarpa (Bur Oak)

Quercus muehlenbergii (Chinquapin Oak)

**Quercus nigra* (Water Oak)

Quercus palustris (Pin Oak)

'Crown Rite'
'Sovereign'

Quercus phellos (Willow Oak)

***Quercus prinus* (Chestnut Oak)**

***Quercus robur* (English Oak)**

'Attention'
'Concordia'
'Fastigiata'
'Skymaster'
'Skyrocket'
'Westminster Globe'

***Quercus rubra* (Red Oak)**

***Quercus shumardii* (Shumard Oak)**

***Sassafras albidum* (Sassafras)**

****Sophora japonica* (Japanese Pagoda Tree)** Some pagoda trees are hardier than others. Keep well watered and keep other stresses to a minimum to maximize hardiness potential.

'Regent'
'Princeton Upright'

***Taxodium ascendens* (Pond Cypress)**

'Prairie Sentinel'

***Taxodium distichum* (Bald Cypress)**

'Monarch of Illinois'
'Shawnee Brave'

***Tilia cordata* (European Linden)**

'Chancellor'
'Glenleven'
'Greenspire'
'June Bride'
'Rancho'

***Tilia x euchlora* (Crimean Linden)**

'Redmond'

***Tilia tomentosa* (Silver Linden)**

***Ulmus americana* (American Elm)**

'Princeton' (Resistant to Dutch Elm Disease)

***Ulmus carpinifolia* (Smooth leaf elm)**

***Ulmus parvifolia* (Chinese Elm)**

(species is excellent)

'Burgundy'
'Dynasty'
'Emerald Isle'
'Emerald Vase'
'Gold Globe'
'Millikan'
'Ohio'

***Ulmus x* (Hybrid Elms)** (replacement for American elm)

'Urban Elm'
'Patriot'
'Pioneer'
'Homestead'
'Prospector'

***Zelkova serrata* (Japanese Zelkova)**

'Green Vase'
'Halka'
'Spring Grove'
'Village Green'

Tall Evergreen Trees

(over 50 feet high when mature)

(*Plants which are fine for western and southern Kentucky but not central, eastern and northern parts of the state.)

Scientific Name (Common Name)

***Abies nordmanniana* (Nordmann Fir)**

Cedrus deodora
'Shalimar'

***Cedrus libani* (Hardy Cedar of Lebanon)**

var. stenocoma

***Picea abies* (Norway Spruce)**

***Picea glauca* (Black Hills Spruce)**
'Densata'

***Picea omorika* (Serbian Spruce)**

***Picea orientalis* (Oriental Spruce)**

***Picea pungens* (Colorado Spruce)**

'Glauca'
'Hoopsii'
'Thompsonii'
'Moerheimii'
'Kosteri'
'Fat Albert'

***Pinus densiflora* (Japanese Red Pine)**

***Pinus flexilis* (Limber Pine)**

***Pinus nigra* (Austrian Pine)**

***Pinus resinosa* (Red Pine)**

***Pinus strobus* (White Pine)**

****Pinus thunbergiana* (Japanese Black Pine)**

***Pseudotsuga menziesii* (Douglas Fir)**

'Glauca'

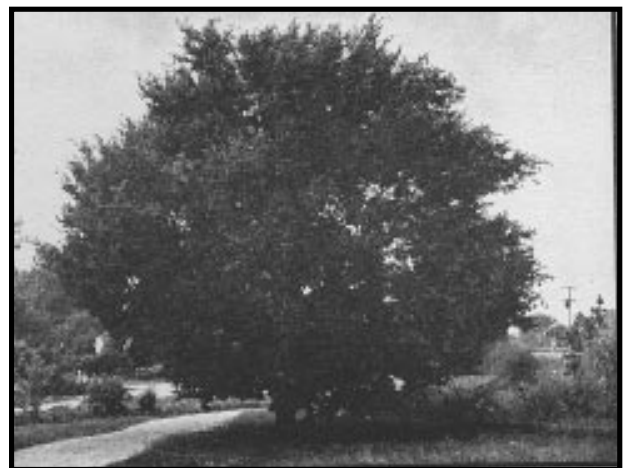
***Thuja occidentalis* (American Arborvitae, White Cedar)**

'Emerald'
'Nigra'
'Techney'

***Thuja plicata* (Giant Arborvitae)**

'Atrovirens'

***Tsuga canadensis* (Canadian Hemlock)**



Chinese Elm

Medium Deciduous Trees

(25-50 ft high when mature)

(*Plants which are fine for western and southern Kentucky but not central, eastern and northern parts of the state.)

Scientific Name (Common Name)
<i>Acer buergeranum</i> (Trident Maple)
<i>Acer campestre</i> (Hedge Maple) 'Queen Elizabeth'
<i>Acer cissifolium</i> (Ivy-leaved Maple)
<i>Acer griseum</i> (Paperbark Maple)
<i>Acer miyabei</i> (Miyabe Maple)
<i>Acer tataricum</i> (Tatarian Maple) 'Sarah'
<i>Aesculus x carnea</i> (Red Horse Chestnut) 'Briotii' 'O'Neill'
<i>Aesculus pavia</i> (Red Buckeye)
<i>Alnus glutinosa</i> (Black Alder) 'Pyramidalis' 'Fastigiata'
<i>Amelanchier arborea</i> (Downy Serviceberry) 'Autumn Sunset'
<i>Amelanchier canadensis</i> (Shadblow Serviceberry)
<i>Amelanchier grandiflora</i> (Apple Serviceberry) 'Cumulus' 'Autumn Brilliance' 'Princess Diana'
<i>Amelanchier laevis</i> (Allegheny Serviceberry)
<i>Asimina triloba</i> (Pawpaw)
<i>Betula alleghaniensis</i> (Yellow Birch)
<i>Betula Jacquemontii</i>
<i>Betula lenta</i> (Sweet Birch, Cherry Birch)

<i>Betula maximowicziana</i> (Monarch Birch)
<i>Betula nigra</i> (River Birch) 'Heritage'
<i>Betula platyphylla</i> (Asian White Birch) 'Japonica' 'Whitespire'
<i>Betula populifolia</i> (Gray Birch)
<i>Carpinus betulus</i> (European Hornbeam) 'Columnaris' 'Fastigiata'
<i>Carpinus caroliniana</i> (American Hornbeam, Musclewood)
<i>Castanea mollissima</i> (Chinese Chestnut) (spiny fruit and foul odor of flowers)
<i>Catalpa bungei</i>
<i>Celtis occidentalis</i> (Hackberry) 'Prairie Pride'
<i>Cercidiphyllum magnificum</i> (Weeping Katsura) 'Pendulum'
<i>Cladrastis kentukea</i> (American Yellowwood) 'Rosea'
<i>Corylus colurna</i> (Turkish Filbert)
<i>Franklinia alatamaha</i> (Franklin Tree)
<i>Fraxinus ornus</i> (Flowering Ash)
<i>Fraxinus pennsylvanica</i> (Green Ash) 'Leprechaun'
<i>Halesia caroliniana</i> (Carolina Silverbell)
<i>Halesia diptera magniflora</i> (Two-winged silverbell)
<i>Halesia monticola</i> (Mountain Silverbell)
<i>Hovenia dulcis</i> (Japanese Raisintree)
<i>Koelreuteria paniculata</i> (Golden Raintree) 'September'
<i>Maackia amurensis</i> (Amur Maackia)

<i>Maclura pomifera</i> 'Cottonwood' 'Colmar' 'Sioux' 'Park' 'Wichita' 'White Shield'
<i>Magnolia kobus</i> (Kobus Magnolia)
<i>Magnolia virginiana</i> (Sweet Bay) 'Milton'
<i>Morus alba</i> (White Mulberry) 'Fan San' 'Stribling'
<i>Ostrya virginiana</i> (Hop Hornbeam)
<i>Oxydendrum arboreum</i> (Sourwood)
<i>Parrotia persica</i> (Persian Parrotia)
<i>Phellodendron amurense</i> (Cork Tree) 'Macho'
<i>Prunus</i> (Okame Cherry) 'Okame'
<i>Prunus sargentii</i> (Sargent Cherry) 'Columnaris'
<i>Prunus serrulata</i> (Kwanzan Japanese Cherry) 'Kwanzan'
<i>Prunus x yedoensis</i> (Yoshino Cherry) 'Akebono'
<i>Pyrus calleryana</i> (Callery Pear) 'Aristocrat' 'Cleveland Select' 'Autumn Blaze' 'Redspire' 'Chanticleer' 'Whitehouse' 'Capitol'
<i>Pyrus fauriei</i> (Korean Pear)
<i>Robinia pseudoacacia</i> (Black Locust) 'Frisia' 'Umbraculifera'
<i>Sorbus aucuparia</i> (Mountain Ash) 'Black Hawk'
<i>Sorbus alnifolia</i> (Korean Mountain Ash)
<i>Sorbus rufoferriginea</i> 'Longwood Sunset'
<i>Sophora davidii</i>

Stewartia monadelph (Tall Stewartia)

Stewartia koreana (Korean Stewartia)

Stewartia pseudocamellia (Japanese Stewartia)

Syringa pekinensis (Pekin Lilac)

Syringa reticulata (Japanese Tree Lilac)

'Ivory Silk'

'Summer Snow'

Tetradium danielli (Korean Evodia)

Ulmus alata (Winged Elm)

Medium Evergreen Trees

(25-50 ft high when mature)

(*Plants which are fine for western and southern Kentucky but not central, eastern and northern parts of the state.)

Scientific Name (Common Name)

Abies concolor (White Fir)

Chamaecyparis obtusa (Hinoki Cypress) (many good cultivars available)

Chamaecyparis pisifera (Thread Cypress)

'Filifera'

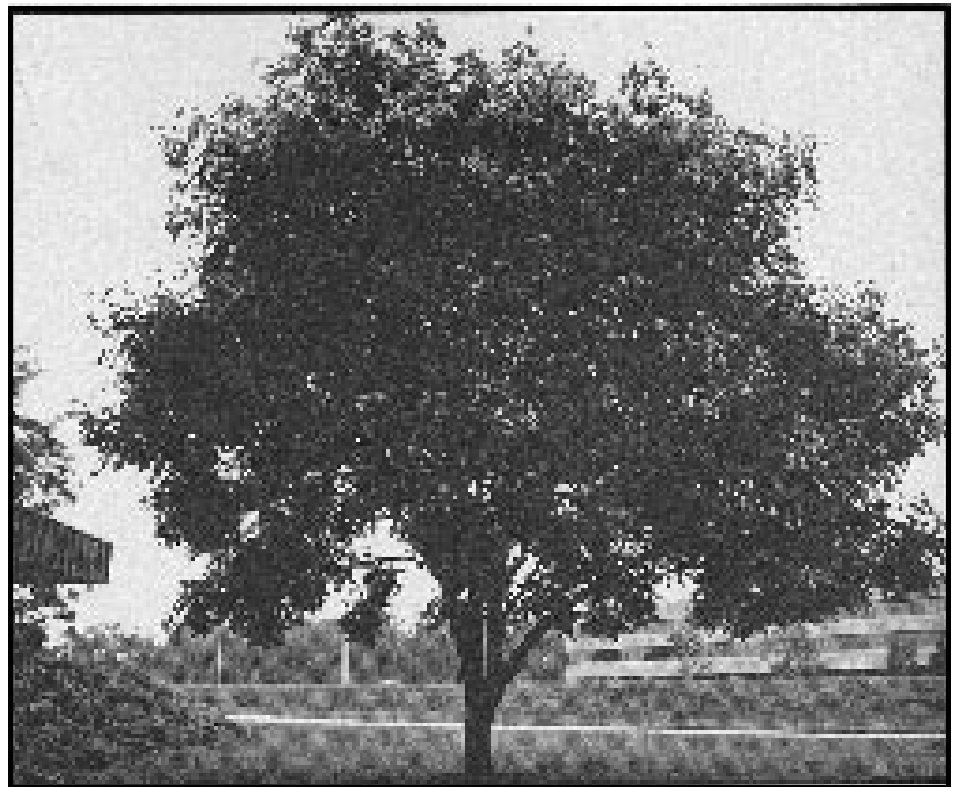
'Filifera Aurea'

'Plumosa'

'Plumosa Aurea'

Ilex attenuata (Foster No. 2 Holly)

'Fosteri'



Golden Raintree

Ilex opaca (American Holly)

'Cecile'

'Chief Paduke'

'Indian Maiden'

'Julie Koehler'

'Judy Evans'

'Klein #1'

'Lady Alice'

'Maryland Dwarf'

'Richards'

'Virginia Giant'

Ilex pedunculosa (Longstalk Holly)

Juniperus chinensis (Chinese Juniper)

'Hetz Columnaris'

'Keteleeri'

Juniperus virginiana (Eastern Red Cedar)

'Burkii'

'Canaerti'

'Hillspire'

Magnolia grandiflora

'Spring Grove #16'

Magnolia virginiana (Sweetbay

Magnolia) (evergreen form)

var. *australis* 'Henry Hicks'

Osmanthus americanus (Devilwood)

Pinus bungeana (Lacebark Pine)

Pinus cembra (Swiss Stone Pine)

Pinus densiflora (Dragon's Eye Japanese Red Pine)

'Oculus-draconis'

Pinus parviflora (Japanese White Pine)

Pinus strobus (White Pine)

'Fastigiata' (columnar)

'Pendula' (weeping)

Pinus virginiana (Virginia Pine, Scrub Pine)

Platycladus orientalis (Oriental Arborvitae)

Taxus baccata (English Yew)

Taxus cuspidata (Upright Japanese Yew)

'Capitata'

Tsuga carolina (Carolina Hemlock)

Small Deciduous Trees/Large Shrubs

(10-25 ft high when
mature)

(*Plants which are fine for western
and southern Kentucky but not
central, eastern and northern parts of
the state.)

Scientific Name (Common Name)

Acer ginnala (Amur Maple)

'Flame'
'Compacta'

Acer japonicum (Japanese Maple or Fullmoon Maple)

'Filicifolium'
'Aconitifolium'

Acer maximowiczianum (Nikko Maple)

Acer nikoense x *A. griseum* (Hy- brid Trifoliolate Maple)

Acer palmatum (Japanese Maple)

'Atropurpurea'
'Bloodgood'
'Glowing Embers'
*'Sango Kaku' (Coralbark
Japanese Maple)

Acer tegmentosum (Manchu Striped Maple)

Acer truncatum (Shantung Maple)

'Pacific Sunset'

Alnus maritima (Seaside Alder)

Aesculus parviflora (Bottlebrush Buckeye)

Betula nigra (Dwarf River Birch)

'Fox Valley'

Buddleia alternifolia (Fountain Buddleia)

Cercidiphyllum japonicum (Weeping Katsura Tree)

'Pendula'

Cercis canadensis (Eastern Redbud)

var. *alba*
'Forest Pansy'
'Flame'

Cercis canadensis

var. *texensis*
'Oklahoma'
'Silver Cloud'

Chionanthus retusus (Chinese Fringe Tree)

Chionanthus virginicus (Fringe Tree)

Clethra barbinervis (Japanese Clethra)

Cornus alternifolia (Pagoda Dogwood)

Cornus florida (Flowering Dogwood)

'Cherokee Chief'
'Cherokee Princess'
'Cloud Nine'
'First Lady'
'Pendula'
'Purple Glory'
'Rainbow'
'Rubra'
'Summertime'
'Sweetwater'
'Welchii'

Cornus kousa (Kousa Dogwood)

'Milky Way'
'Rochester'
'Snowboy'
var. *chinensis*
var. *rubra* (pink kousa
dogwood)

Cornus mas (Cornelian Cherry Dogwood)

'Golden Glory'

Cornus officinalis (Japanese Cornel Dogwood)

Cornus x *hybrids* from Rutgers

'Ruth Ellen'
'Galaxy'

Cornus racemosa (Gray Dogwood)

Corylus avellana (Curly European Filbert or Harry Lauder's Walking Stick)

'Contorta'

Corylus maxima (Purple Giant Filbert)

'Purpurea'

Cotinus obovatus (American smoketree)

Cotoneaster multiflorus (Many- Flowered Cotoneaster)

Crataegus crus-galli (Cockspur Hawthorn)

Crataegus crus-galli inermis (Thornless Cockspur Hawthorn)

Crataegus lavalleyi (Lavalle Hawthorn)

Crataegus phaenopyrum (Wash- ington Hawthorn)

'Vaughn'

Crataegus viridis (Hawthorn)

'Winter King'

Enkianthus campanulatus (Redvein Enkianthus)

Forsythia intermedia (Border Forsythia)

'Lynwood Gold'
'Beatrice Farrand'
'Karl Sax'
'Spring Glory'

Fothergilla major (Large Fothergilla)

Hamamelis x intermedia (Witch Hazel)

'Arnold Promise'
'Primavera'
'Sunburst'

Hamamelis virginiana (Common Witch Hazel)

Hydrangea paniculata (Panicle Hydrangea)

'Grandiflora'
'Tardiva'

Ilex decidua (Possum Haw)

'Council Fire'
'Pocahontas'
'Warren's Red'

Ilex serrata (Finetooth Holly)

Ilex serrata x I. verticillata

'Apollo' (male)
'Autumn Glow'
'Bonfire'
'Harvest Red'
'Raritan Chief' (male)
'Sparkleberry'
'Southern Gentleman' (male)

***Ilex verticillata* (Winterberry)**

'Christmas Cheer'
'Chrysocarpa'
'Winter Red'
(many other cultivars)

***Kolkwitzia amabilis* (Beauty Bush)**

***Larix decidua* (European Larch)**

'Pendula'

***Ligustrum ibolium* (Ibolium Privet)**

***Ligustrum ovalifolium* (California Privet)**

****Ligustrum sinense* (Chinese Privet)**

***Ligustrum vicaryi* (Vicary Golden Privet)**

***Lindera benzoin* (Spicebush)**

***Lonicera fragrantissima* (Fragrant Honeysuckle)**

***Lonicera morrowii* (Morrow Honeysuckle)**

***Lonicera tatarica* (Tatarian Honeysuckle)**

'Zabeliana'

***Magnolia* (Hybrid Magnolias)**

'Ann'
'Betty'
'Butterflies'
'Elizabeth'
'Galaxy'
'Goldfinch'
'Jane'
'Judy'
'Pinkie'
'Randy'
'Ricki'
'Spectrum'
'Susan'
'Wade's Memory'
'Yellow Fever'

Magnolia liliflora x M. sprengera

'Diva'

Magnolia loebneri

'Ballerina'
'Leonard Messel'
'Merrill' (Dr. Merrill Magnolia)
'Spring Snow'

***Magnolia soulangiana* (Saucer Magnolia)**

'Lilliputin'

***Magnolia stellata* (Star Magnolia)**

'Centennial'
'Jane Platt'
'Roseum'
'Royal Star'
'Rubra'

***Malus* (Crabapple)** Many cultivars available. The following were tested at UK and proved quite resistant to disease/insect pressures.

'David'
'Harvest Gold'
'Jewelberry'
'Red Jade'
'Red Jewel'
'Prairiefire'

Malus baccata

'Jackii'

***Malus floribunda* (Flowering Crabapple)**

Malus halliana

'Parkmanii'

Malus sieboldii

'Zumi Calocarpa'

***Philadelphus virginialis* (Mockorange)**

'Minnesota Snowflake'
'Natchez'

***Physocarpus opulifolius* (Eastern Ninebark)**

***Prunus x* (Hally Jolivette Cherry)**

'Hally Jolivette'

***Prunus subhirtella* (Higan Cherry)**

'Autumnalis'
'Pendula'

***Prunus sargentii x P. subhirtella* (Flowering Hybrid Cherry)**

'Accolade'

Prunus x incam

'Okame'

***Pseudocydonia sinensis* (Chinese quince)**

***Rhamnus frangula* (Cutleaf Buckthorn)**

'Asplenifolia'

***Rhododendron arborescens* (Sweet or Smooth Deciduous Azalea)**

***Rhododendron calendulaceum* (Flame Deciduous Azalea)**

***Rhododendron canescens* (Florida Pinxter Deciduous Azalea)**

***Rhododendron prinophyllum* (Roseshell Deciduous Azalea)**

***Rhododendron prunifolium* (Plumleaf Deciduous Azalea)**

***Rhododendron vaseyi* (Pinkshell Deciduous Azalea)**

***Rhus chinensis* (Chinese Sumac)**

'September Beauty'

***Rhus glabra* (Smooth Sumac)**

'Laciniata'

***Salix caprea* (Goat Willow)**

'Pendula' (weeping form — female)

***Staphylea x elegans* (Bladdernut hybrid)**

***Styrax japonicus* (Japanese Snowbell)**

***Styra x obassia* (Fragrant Snowbell)**

***Syringa vulgaris* (Common Lilac)**
(400 or more selections)

***Ulmus glabra* (Camperdown Elm)**

'Camperdownii'

***Viburnum burkwoodii* (Burkwood Viburnum)**

'Chenaultii'
'Mohawk'

***Viburnum carlcephalum* (Fragrant Viburnum)**

***Viburnum dentatum* (Arrowwood Viburnum)**

***Viburnum dilatatum* (Linden Viburnum)**

'Iroquois'

***Viburnum lantana* (Wayfaring Tree)**

'Mohican'

***Viburnum lentago* (Nannyberry Viburnum)**

***Viburnum macrocephalum* (Chinese Snowball Viburnum)**

***Viburnum opulus* (Cranberry Bush Viburnum)**
'Roseum'

***Viburnum plicatum* (Doublefile Viburnum)**

var. tomentosum

'Mariesii'

'Newport'

'Shasta'

'Shoshoni'

'Summer Snowflake'

'Summer Stars'

***Viburnum prunifolium* (Black Haw)**

***Viburnum x rhytidophylloides* (Lantanaphyllum Viburnum)**

'Willowwood'

'Allegheny'

***Viburnum rufidulum* (Southern Blackhaw)**

***Viburnum sargentii* (Onondaga Viburnum)**

'Onondaga'

'Susquehanna'

***Viburnum sieboldii* (Seneca Viburnum)**

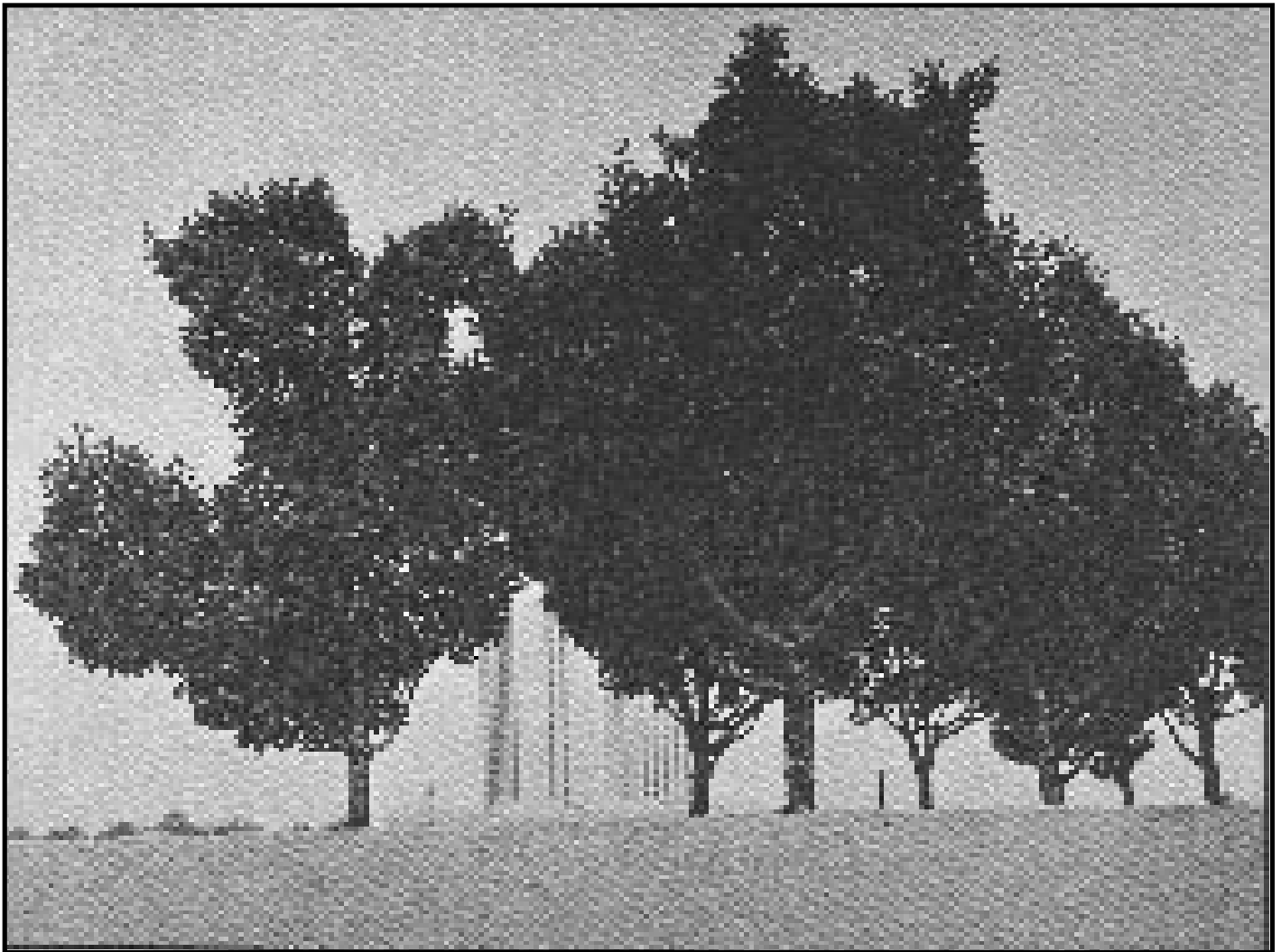
'Seneca'

***Viburnum setigerum* (Tea Viburnum)**

'Aurantiacum'

****Vitex agnus-castus* (Chaste Tree)**
(Trim this plant to 1 ft ht each spring. Blooms are produced on new growth. Roots are hardy.)

***Ziziphus jujuba* (Chinese Date)**



Evergreen Tree/Large Shrub

(10-25 ft high when
mature)

(*Plants which are fine for western
and southern Kentucky but not
central, eastern and northern parts of
the state.)

Scientific Name (Common Name)

Abies koreana (Korean Fir)

'Prostrate Beauty'

Buxus sempervirens

'Pyramidata'

Chamaecyparis obtusa (Hinoki Cypress)

'Magnifica'

'Torulosa'

**Ilex aquifolium* (English Holly)

*'Balkans'

*'Ciliata Major'

Ilex attenuata

'Sunny Foster'

Ilex crenata (Japanese Holly)

'Noble's Upright'

Juniperus chinensis (Chinese Juniper)

'Hetzii'

'Mint Julep'

'Mountbatten'

'Old Gold'

'Pfitzeriana'

'Robusta Green'

'Spartan'

*'Torulosa'

Juniperus scopulorum (Rocky Mountain Juniper)

'Blue Haven'

'Tolleson's Weeping'

'Wichita Blue'

Juniperus virginiana (Eastern Red Cedar)

'Grey Owl'

'Skyrocket'

Kalmia latifolia (Mountain Laurel)

'Nipmuck'

'Ostbo Red'

'Olympic Fire'

'Richard Jayne'

'Shooting Star'

'Silver Dollar'

Picea glauca (Dwarf Albert Spruce)

'Conica'

Pinus densiflora (Japanese Red Pine)

'Umbraculifera'

Pinus densiflora (Red Pine)

'Pendula'

Pinus mugo (Mugho Pine)

Pinus strobus (White Pine)

'Contorta'

Pinus sylvestris (Scotch Pine)

'Watereri'

Rhododendron catawbiense (Catawba Rhododendron)

'America'

'Crimson Glory'

'Cunningham's White'

'English Roseum'

'Janet Blair'

'Lee's Dark Purple'

'Maxicat'

'Nova Zembla'

'Roseum Elegans'

'Scintillation'

(and other H₁ cultivars)

Rhododendron (Azalea)

'Exbury Hybrid'

'Cecile'

'Gibraltar'

'Klondyke'

'Old Gold'

'Peach Sunset'

(and other Exbury or Knaphill
cultivars)

Rhododendron maximum (Rose- bay Rhododendron)

'Album'

Sciadopitys verticillata (Umbrella Pine)

Taxus cuspidata (Japanese Yew)

'Intermedia'

Taxus media (Anglojap Yew)

'Hicksii'

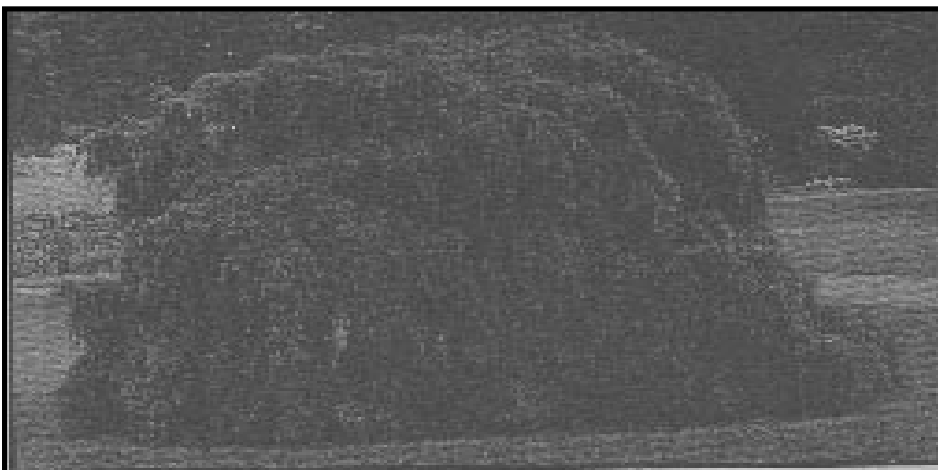
'Hatfieldii'

Tsuga canadensis (Canadian Hemlock)

'Pendula' (Weeping
Hemlock)

'Sargentii'

Viburnum pragensis (Pragensis Viburnum)



Weeping Hemlock



Saucer Magnolia Flowers

Medium Deciduous Shrubs

(6-10 ft high when mature)

(*Plants which are fine for western and southern Kentucky but not central, eastern and northern parts of the state.)

Scientific Name (Common Name)

Abelia chinensis (Chinese Abelia)

Acanthopanax sieboldianus (Five-Leaved Aralia)

Acer palmatum (Japanese Maple)

'Burgundy Lace'
'Crimson Queen'
'Crispum'
'Dissectum'
'Red Select'
'Waterfall'
'Viridis'
(and other cutleaf cultivars)

Aronia arbutifolia (Red Chokeberry)

'Brilliantissima'

Aronia melanocarpa (Black Chokeberry)

'Elata'

Berberis mentorensis (Mentor Barberry)

Berberis thunbergii (Japanese Barberry)

'Atropurpurea'
'Baggabelle'
'Helmond Pillar'
'Rosy Glow'

Buddleia davidii (Orange-Eye Butterfly Bush)

'Black Knight'
'Charming'
'Dubonnet'
'Fascination'
'Opera'
'Purple Prince'
'White Perfection'
'White Profusion'

Buddleia davidii

var. *nanhoensis*
'Petite Indigo'
'Petite Plum'
'Pink Delight'

Calycanthus floridus (Carolina Allspice)

'Athens'
'Edith Wilder'
'Michael Lindsay'

Cercis chinensis (Chinese Redbud)

'Avondale'

Chaenomeles speciosa (Flowering Quince)

'Pink Lady'
'Snow'
'Texas Scarlet'
'Toyonoshiki'

Clethra alnifolia (Summer Sweet)

'Connecticut Pink'
'Fern Valley Pink'
'Hokey Pink'
'Rosea'

Cornus alba (Tatarian Dogwood)

'Argenteo-Marginata'
'Sibirica'

Cornus baileyi (Bailey's Dogwood)

Cornus florida (Flowering Dogwood)

'Pygmaea'

Cornus sericea (Yellow Twig Dogwood)

'Flaviramea'

Cotoneaster divaricata (Spreading Cotoneaster)

Deutzia lemoinei (Slender Deutzia)

Deutzia scabra (Deutzia)

'Pride of Rochester'

Enkianthus campanulatus (Redvein Enkianthus)

Euonymus alata (Burning Bush)

'Compacta'
'Rudy Haag'

Forsythia intermedia (Border Forsythia)

'Sunrise'

Hamamelis vernalis (Vernal Witch Hazel)

Heptacodium miconioides (Seven Son Flower)

Hibiscus syriacus (Rose of Sharon)

'Diane'
'Helene'

Hydrangea quercifolia (Oakleaf Hydrangea)

'Alice'
'Alison'
'Snowflake'

Ilex verticillata (Winterberry)

'Afterglow'
'Sunset'
'Winter Red'

Kerria japonica (Japanese Kerria)

'Pleniflora'

Ligustrum vulgare (Privet)

'Lodense'

Lonicera xylosteum (Honeysuckle)

'Claveyi'

Malus sargentii (Sargent Crabapple)

Morus alba (Weeping Mulberry)

'Pendula'

Myrica pensylvanica (Northern Bayberry)

**Nandina domestica* (Heavenly Bamboo, Nandina)

Prunus x cistena (Purpleleaf Sand Cherry)

Pyracantha coccinea (Pyracantha)

'Kasan'
*'Lalandei Monrovia'

Pyracantha (Pyracantha)

*'Mohave'
*'Navaho'
*'Pueblo'
*'Shawnee'
*'Teton'

Rhododendron bakeri (Cumberland Deciduous Azalea)

Rhododendron canadense (Rhodora Deciduous Azalea)

Rhododendron periclymenoides (formerly called *R. nudiflorum*) (Pinxterbloom Deciduous Azalea)

Rhododendron viscosum (Swamp Deciduous Azalea)

Rhus aromatica (Fragrant Sumac)

Ribes alpinum (Alpine Currant)

Salix gracilistyla (Rosegold Pussy Willow)

Sinocalycanthus sinensis

Spiraea nipponica (Spirea)
'Snowmound'

Spiraea vanhouttei (Vanhoutte Spirea)

Syringa laciniata (Cutleaf Lilac)

Viburnum acerifolium (Mapleleaf Viburnum) (requires shade)

Viburnum carlesii (Koreanspice)
'Compactum'

Viburnum juddii (Judd Viburnum)

Viburnum x (Mohawk Viburnum)
'Mohawk'

Viburnum x pragense (Prague Viburnum)

Weigela florida (Weigela)

- 'Bristol Snowflake'
- 'Bristol Ruby'
- 'Evita'
- 'Minuet'
- 'Rumba'
- 'Samba'
- 'Vaniceki'
- 'Variegata'

Medium Evergreen Shrubs

(6-10 ft high when mature)

(*Plants which are fine for western and southern Kentucky but not central, eastern and northern parts of the state.)

Scientific Name (Common Name)

Chamaecyparis obtusa (Cypress)
'Sanderi'
*'Nana Gracilis' (Dwarf)

Chamaecyparis pisifera (Sawara Cypress)
'Cyanoviridis'
'Snow'

Ilex glabra (Inkberry)

**Ilex x meserveae* (Blue Holly)
'Blue Boy'
'Blue Girl'
'Blue Maid'
'Blue Prince'
'Blue Princess'
'Blue Stallion'
'China Boy'
'China Girl'

Juniperus chinensis (Chinese Juniper)
'Sea Green'

Mahonia aquifolium (Oregon Grape)

**Mahonia bealei* (Leatherleaf Mahonia) (requires shade)

Pieris japonica (Japanese Pieris, Andromeda)
'Compacta'
'Crispa'
'Millstream'
'Red Mill'
'Variegata'

Pinus strobus (Dwarf White Pine)
'Nana'

Taxus cuspidata
'Nana'
'Thayerae'

Taxus media (Yew)
'Brownii'
'Densiformis'
'Wardii'

Tsuga canadensis (Canadian Hemlock)
'Jeddeloh'



Mature ground cover and shrubs



Blue Princess Holly

Small Deciduous Shrubs

(4-5 ft high when mature)

(*Plants which are fine for western and southern Kentucky but not central, eastern and northern parts of the state.)

Scientific Name (Common Name)

Abelia grandiflora (Glossy Abelia)

Berberis thunbergii (Golden Japanese Barberry)
'Aurea'

Callicarpa dichotoma (Purple Beautyberry)

Callicarpa japonica (Japanese Beautyberry)

Clethra alnifolia (Summersweet)
'Hummingbird'

Cotoneaster horizontalis (Rock Cotoneaster)

**Cytissus scoparius* (Moonlight Scotch Broom)
'Moonlight'

**Daphne caucasica* (Caucasian Daphne)

Deutzia gracilis (Slender Deutzia)

Diervilia sessilifolia (Southern Bush Honeysuckle)

Hydrangea arborescens (Hills-of-Snow)
'Grandiflora'

Hydrangea arborescens subsp. radiata

Hypericum kalmianum (Kalm St. Johnswort)

Ilex verticillata

'Cacapon'
'Fairfax'
'Red Sprite'
'Shaver'

Itea japonica (Beppu Sweetspire)
'Beppu'

Itea virginica (Virginia Sweetspire)
'Henry's Garnet'

Malus sargentii (Tina Crabapple)
'Tina'

Physocarpus opulifolius
'Dart's Gold'

Potentilla fruticosa

'Abbotswood'
'Gold Drop'
'Jackmannii'
'Moonlight'
'Mt. Everest'
'Sutter's Gold'

Pyracantha coccinea (Pyracantha)
'Gnome'
'Lowboy'

Rhododendron mucronulatum (Korean Rhododendron)
'Cornell Pink'

Rhododendron yedoense (Poukhanense Rhododendron)
var. poukhanense

Rhododendron (Azalea)
'C.C. Miller'
'Boudoir'
'Stewartsonia'

Rhododendron (Hybrids from *R. carolinianum* x *R. dauricum* *var. sempervirens*)
'P.J.M.'

Syringa meyeri (Meyers Lilac)
'Palibin'

Syringa microphylla (Littleleaf Lilac)

Syringa patula (Miss Kim Lilac)
'Miss Kim'

Viburnum opulus (Dwarf Cranberrybush Viburnum)
'Nana'

Viburnum trilobum (Compact American Cranberry Bush)
'Compactum'

Viburnum utile (Eskimo Viburnum)
'Eskimo'

Small Evergreen Shrubs

(4-5 ft high when mature)

Scientific Name (Common Name)

Buxus microphylla (Boxwood)
'Compacta'
var. koreana
'Wintergreen'

Buxus sempervirens x *B. microphylla*
'Green Gem'
'Green Mound'
'Green Mountain'
'Green Velvet'

Chamaecyparis pisifera (Gold Thread Cypress)
'Filifera Aurea Nana'
'Filifera Mops'

Ilex crenata
'Hetzii'
'Glory'
'Green Thumb'
'Repandans'

Ilex glabra (Inkberry)
'Compacta'
'Nordic'

Ilex opaca (Maryland Dwarf American Holly)
'Maryland Dwarf'

Juniperus chinensis
'Armstrongii'
'Fruitlandii'
'Gold Coast'
'Nick's Compact'
'Ozark Compact'

Juniperus virginiana (Silver Spreader Juniper)
'Silver Spreader'

Leucothoe fontanesiana (Drooping Leucothoe)
'Rainbow'
'Scarletta'

***Mahonia aquifolium* (Compact Oregon Grapeholly)**
'Compactum'

***Picea abies* (Dwarf forms of spruce)**
'Nidiformis'
'Pumila'
'Repens'

***Picea pungens* (Dwarf forms of Colorado Spruce)**
'C.C. Hume'
'Globosum'
'Montgomery'

***Pinus mugo* (Mugo Pine)**
var. mugo
var. pumilio
var. tyrolia

***Pinus sylvestris* (Dwarf Scots Pine)**
'Beuvronensis'

***Rhododendron* (Starry Night Rhododendron)**
'Starry Night'

***Taxus baccata* (Spreading English Yew)**
'Repandens'

Taxus cuspidata
'Densa'
'Nana'

***Tsuga canadensis* (Gentsch White Canadian Hemlock)**
'Gentsch White'



Gable Azalea



Mugho Pine

Low Deciduous Shrubs

(2-3 ft high when mature)

(*Plants which are fine for western and southern Kentucky but not central, eastern and northern parts of the state.)

Scientific Name (Common Name)

Abelia grandiflora

'Nana'
* 'Sherwood'
* 'Prostrata'

Berberis thunbergii

'Crimson Pygmy'
'Kobold'

Caryopteris clandonensis (Blue Mist Bluebeard)

'Blue Mist'

Cornus sericea (Kelsey's Dwarf Dogwood)

'Kelseyi'

**Cotoneaster adpressus* (Early Cotoneaster)

'Praecox'

Cotoneaster apiculatus (Cranberry Cotoneaster)

Cotoneaster dammeri (Bearberry Cotoneaster)

* 'Coral Beauty'
'Skogholmen'

Cotoneaster horizontalis (Perpusilla Rock Cotoneaster)

'Perpusilla'

Cotoneaster microphylla (Small Leaved Cotoneaster)

'Thymifolia'
'Tom Thumb'

**Deutzia gracilis* (Nikko Slender Deutzia)

'Nikko'

Forsythia viridissima (Bronx Forsythia)

'Bronxensis'

Forsythia (Arnold's Dwarf Forsythia)

'Arnold's Dwarf'

Fothergilla gardenii (Dwarf Fothergilla)

'Mt. Airy'
'Blue Mist'

**Hypericum calycinum* (Creeping St. Johnswort)

**Hypericum* (Hidcote St. Johnswort)

'Hidcote'

Jasminum nudiflorum (Winter Jasmine)

**Jasminum floridum* (Showy Jasmine)

Kalmia cuseata (White Wicky Mountain Laurel)

'White Wicky'

Kerria japonica (Variegated Japanese Kerria)

'Picta'

**Nandina domestica*

* 'Harbor'
* 'Nana'

Physocarpus opulifolius (Dwarf Eastern Ninebark)

'Nana'

Rhododendron (Azalea)

'Karens'
'Rosebuds'

Rhododendron atlanticum (Coast or Dwarf Deciduous Azalea)

Rhus aromatica (Gro-Low Fragrant Sumac)

'Gro-Low'

Ribes alpinum (Greenmound Alpine Currant)

'Greenmound'

Rosa wichuriana (Memorial Rose)

Spiraea x bumalda (Spirea)

'Anthony Waterer'
'Gold Flame'
'Live Mound'

Spiraea japonica (Japanese Spirea)

'Gold Mound'
'Little Princess'

Symphoricarpos albus (Snow-berry)

var. *laevigatus*

Zenobia pulverulenta (Dusty Zenobia)

Low Evergreen Shrubs

(2-3 ft high when mature)

(*Plants which are fine for western and southern Kentucky but not central, eastern and northern parts of the state.)

Scientific Name (Common Name)

Abies balsamea (Dwarf Balsam Fir)

'Nana'

Chaenomeles speciosa (Flowering Quince)

'Cameo'

Chamaecyparis obtusa (Hinoki False Cypress)

'Pygmaea Aurescens'

Chamaecyparis pisifera (Moss Cypress)

'Minima'
'Pygmaea'
'Squarrosa Aurea'
'Squarrosa Pygmaea'

Juniperus horizontalis (Compact Juniper)

'Plumosa Compacta'
'Plumosa Youngstown'

Juniperus sabina (Savin Juniper)

'Broadmoor'
'Buffalo'
'Calgary Carpet'
'Variegata'

Juniperus squamata (Juniper)

'Blue Star'
'Parsoni'

Picea abies (Dwarf Norway Spruce)

'Elegans'
'Gregoriana Parsoni'
'Little Gem'
(many other cultivars)

Pieris japonica (Andromeda)

'Dorothy Wycoff'
'Pygmaea'

***Pinus sylvestris* (Riverside Gem Scots Pine)**

'Riverside Gem'

***Rhododendron obtusum* (Azalea)**

'Cascade'

'Coral Bells'

'Hershey Red'

'Hino-Crimson'

'Hino-Pink'

'Hino-Red'

'Hinodegiri'

'Maybelle'

'Snow'

(and other H₁ cultivars)

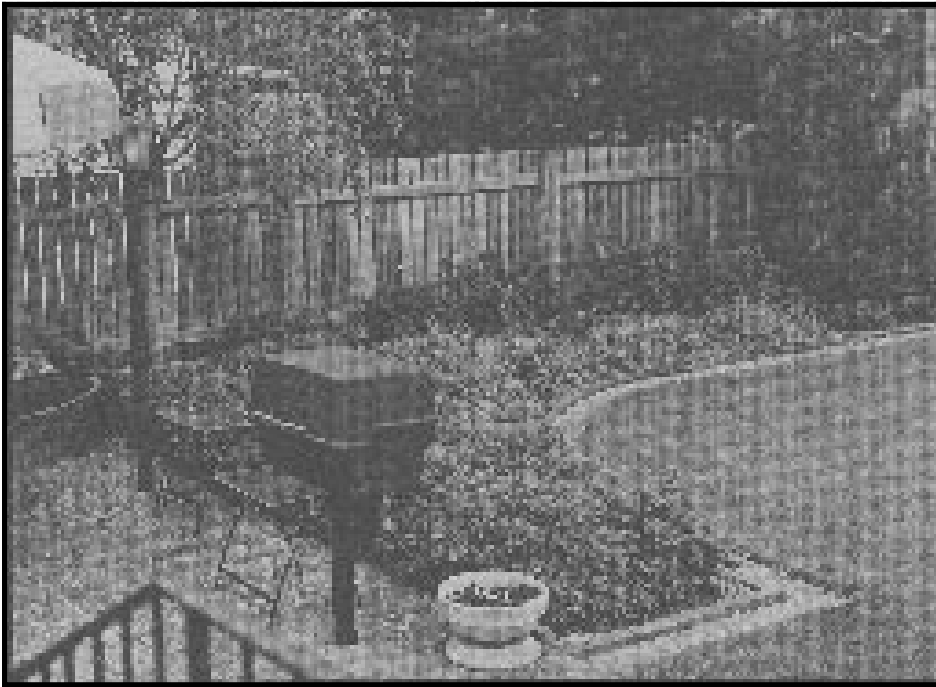
***Rhododendron* (Rhododendron)**

'Purple Gem'

'Ramapo'



(Above) Early spring growth on dwarf conifers has special appeal. (Left) Low growing shrubs can serve as filler with other size plant material.



Fothergilla

Deciduous Ground Covers

(up to 18 inches high when mature)

(*Plants which are fine for western and southern Kentucky but not central, eastern and northern parts of the state.)

Scientific Name (Common Name)

***Ajuga reptans* (Carpet Bugle)**

'Alba'
'Atropurpurea'
'Rubra'
'Variegata'

****Cotoneaster dammeri* (Lowfast Bearberry Cotoneaster)**

'Lowfast'

****Cotoneaster salicifolia* (Willowleaf Cotoneaster)**

*'Repandens'
*'Scarlet Leader'

***Liriope muscari* (Big Blue Lilyturf)**

'Variegata'

***Spiraea japonica* (Alpine Spirea)**

'Alpina'

***Stephanandra incisa* (Crisp Cutleaf Stephanandra)**

'Crispa'

***Xanthorrhiza simplicissima* (Yellow-Root)**



Liriope on right functions as ground cover.

Evergreen Ground Covers

(up to 18 inches high when mature)

Scientific Name (Common Name)

***Euonymus fortunei* (Purple Wintercreeper)**

'Coloratus'
'Emerald Gaiety'
'Emerald Jade'
'Emerald 'n Gold'
'Emerald Surprise'
'Golden Glow'
(and other cultivars)

****Hedera helix* (English Ivy)**

'Thorndale'

***Juniperus chinensis* (Chinese Juniper)**

'Nana Greenmound'
'Procumbens Variegata'
'Procumbens'
'Procumbens Nana'
'Sargentii'

***Juniperus conferta* (Shore Juniper)**

'Blue Pacific'
'Emerald Sea'

***Juniperus horizontalis* (Creeping Juniper)**

'Bar Harbor'
'Blue Chip'
'Blue Mat'
'Emerald Spreader'
'Prince of Wales'
'Turquoise Spreader'
'Wiltonii' (Blue Rug)
'Wisconsin'

***Juniperus sabina* (Blue Forest Savin Juniper)**

'Blue Forest'

***Pachysandra terminalis* (Japanese Spurge)**

'Green Carpet'
'Variegata'

***Paxistima canbyi* (Cliff-Green, Canby Paxistima)**

***Pinus sylvestris* (Repens Scotch Pine)**

'Repens'

***Rhododendron* (Groundcover Azalea)**

'Alexander'

***Vinca minor* (Periwinkle)**

'Bowles'
'Rubra'
'Veckels White'

***Waldsteinia fragarioides* (Barren Strawberry)**



Pachysandra Terminalis

Climbing Vines

Scientific Name (Common Name)

***Akebia quinata* (Fiveleaf Akebia)**

***Campsis radicans* (Trumpet Vine)**
'Madame Galen'

***Celastrus orbiculatus* (Oriental Bittersweet)**

***Celastrus scandens* (American Bittersweet)**

***Clematis paniculata* (Sweet Autumn Clematis)**

***Clematis* (Clematis)**

'Betty Corning'
'Cardinal'
'Ernest Markum'
'Gypsy'
'Henryi'
'Hudaline'
'Jackmanni'
'Lincoln Star'
'Nellie R. Moser'
'Pink Chiffon'
'Ramona'

***Humulus lupulus* (Golden Hop Vine)**

'Aureus'

***Hydrangea anomala* (Climbing Hydrangea)**

subsp. petiolaris

***Lonicera x bella* (Belle Honeysuckle)**

'Dropmore Scarlet'

***Lonicera x heckrottii* (Goldflame Honeysuckle)**

***Lonicera sempervirens* (Trumpet Honeysuckle)**

***Parthenocissus tricuspidata* (Boston Ivy)**

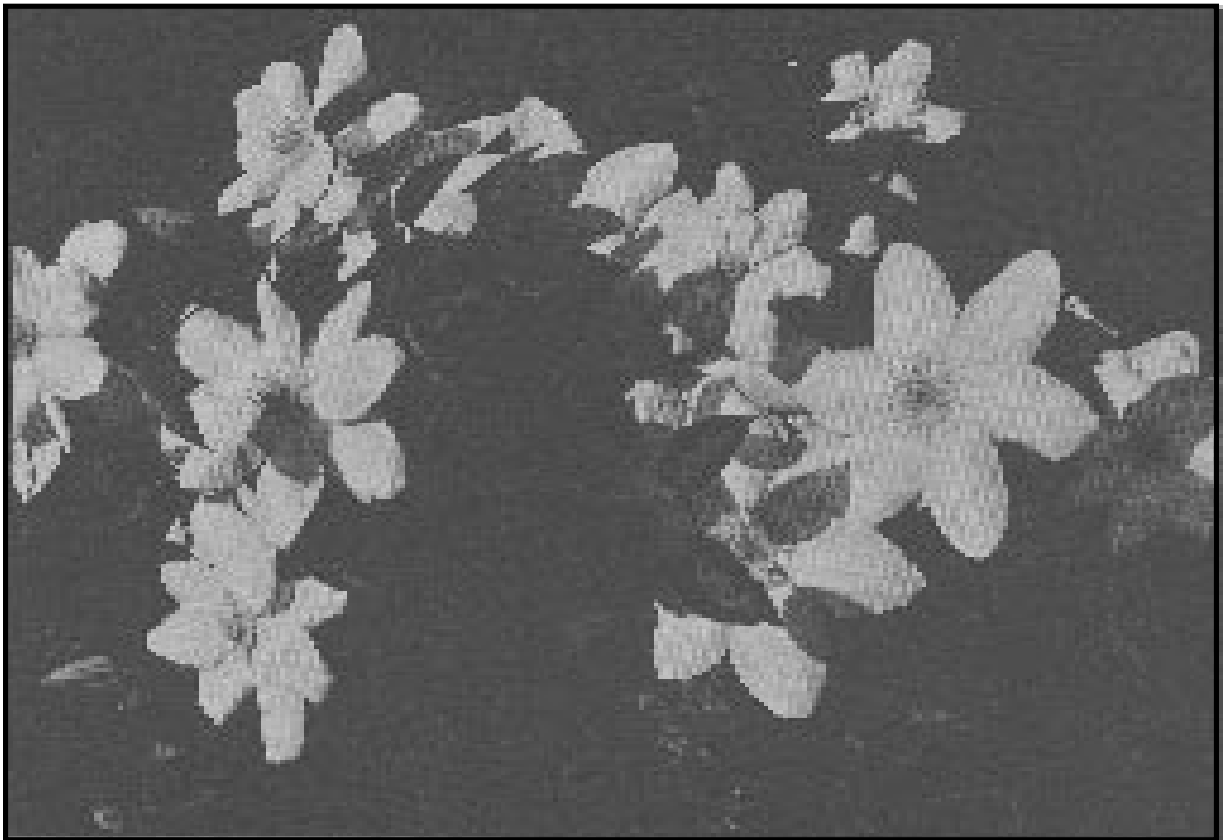
'Beverly Brooks'
'Lowii'

***Schizophragma hydrangeoides* (Japanese Hydrangea Vine)**

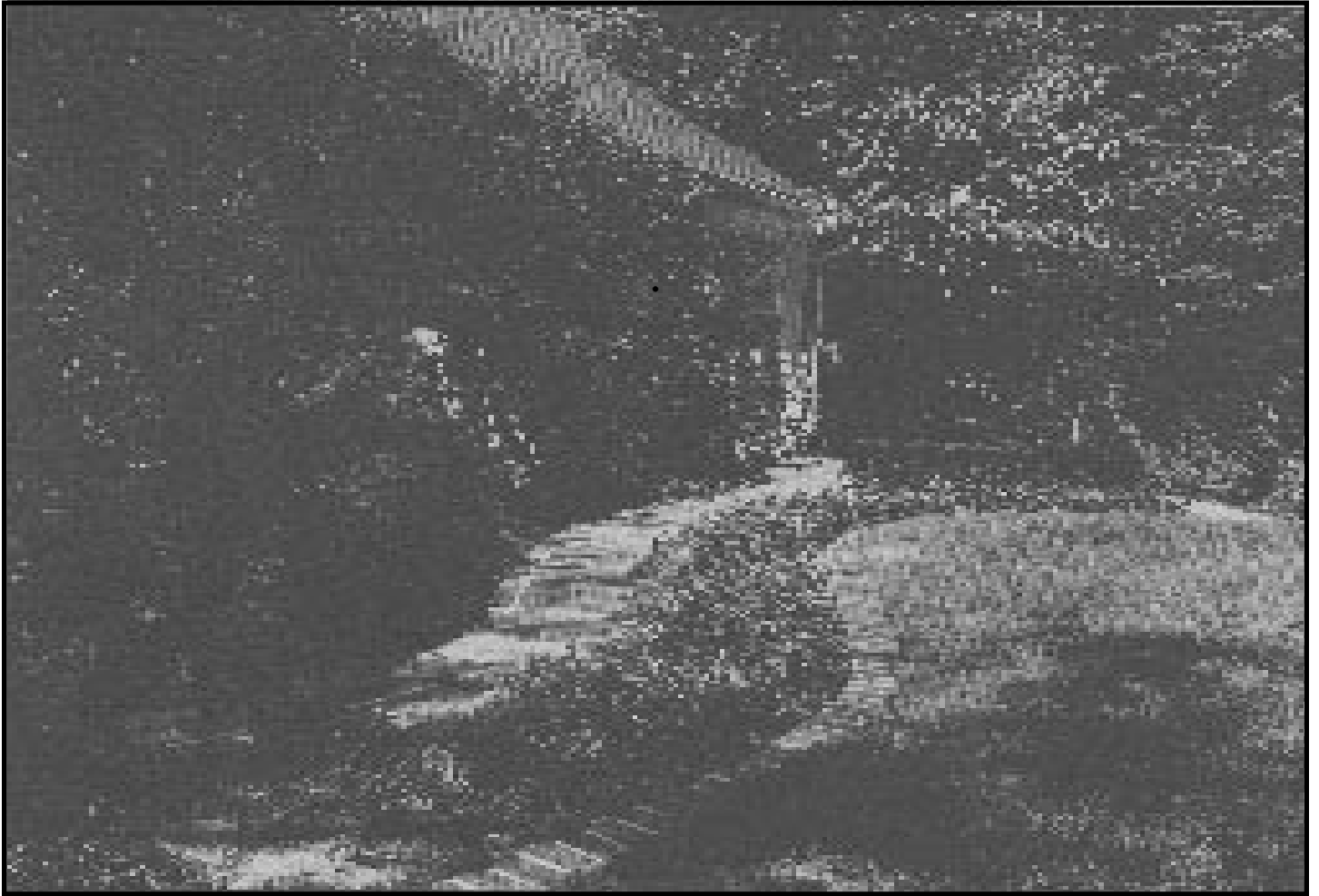
***Wisteria floribunda* (Japanese Wisteria)**

'Alba'
'Royal Purple'

***Wisteria sinensis* (Chinese Wisteria)**



Clematis



Ground covers give relief from monotony of grass and serve to direct traffic.

Unusual bark adds beauty and interest to winter landscapes.



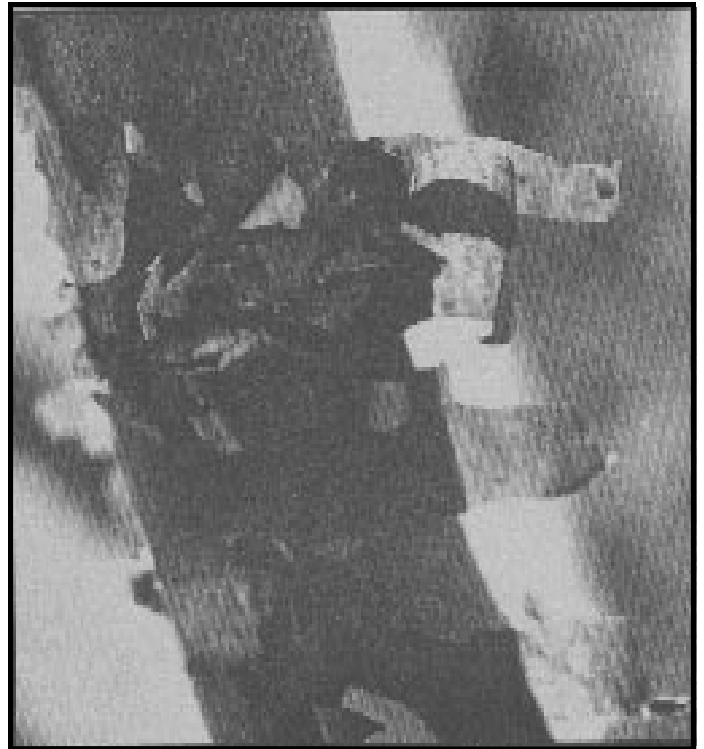
Corktree



Lacebark Pine



Manchu Striped Maple



Paperbark Maple