

Cylicodontophorus (Cyd.) bicoronatus

50 μ m (inset: 430X)

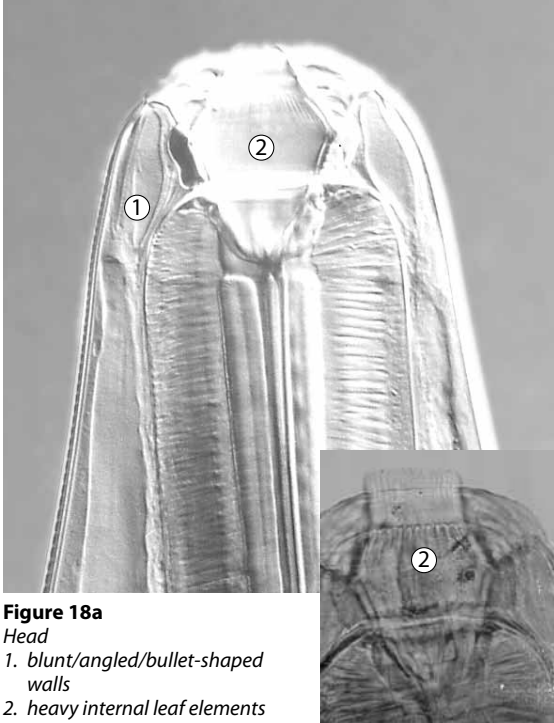


Figure 18a

Head

1. blunt/angled/bullet-shaped walls
2. heavy internal leaf elements

100 μ m

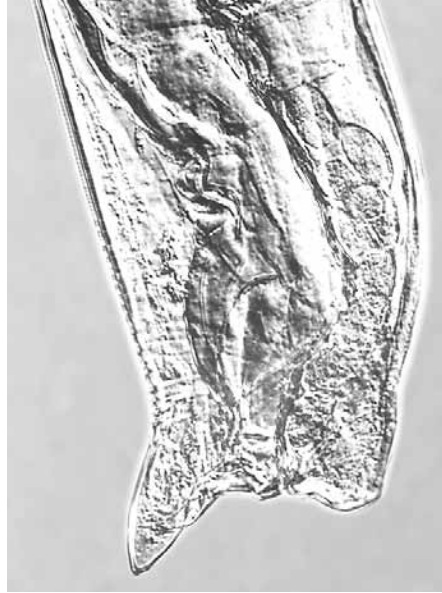


Figure 18b

Female tail

50 μ m

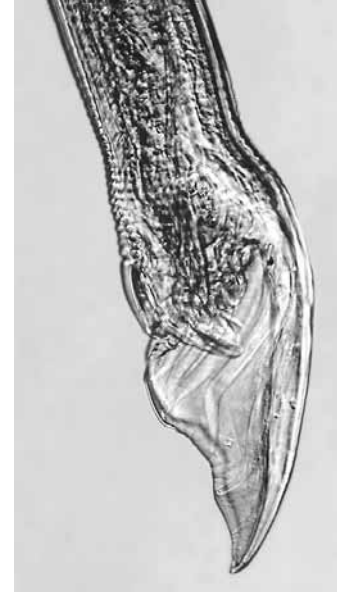


Figure 18c

Male tail

This is one of the easiest species to identify because of two characteristics: the extremely **short, thick, and stubby buccal capsule walls** that fan out away from each other and the very **heavy internal leaf elements**. The walls are **bullet-shaped** but are dented in the middle. Rising out of the tips of the mouth walls are the **leaves of the internal crown**, which are so broad that they resemble the **teeth of a comb**.

The female tail is stumpy and very blunt, and it comes to a fairly wide spike at the end. The **male bursa** is symmetrical, has a moderately long dorsal ray, and **curves slightly back ventrally**. At the present time, this is the **only species in *Cyd.***

Size: medium
Preferred site: ventral colon
Represents <1% of population

Walls of the Buccal Capsule:

- extremely short, thick, stubby and bullet-shaped
- fan out away from each other
- dented in the middle

Other Distinguishing Characteristics:

- very heavy internal leaf elements that resemble the teeth of a comb