

Parapoteriostomum spp.

Parapoteriostomum (Par.) euproctus
(formerly *Cylicodontophorus euproctus*)

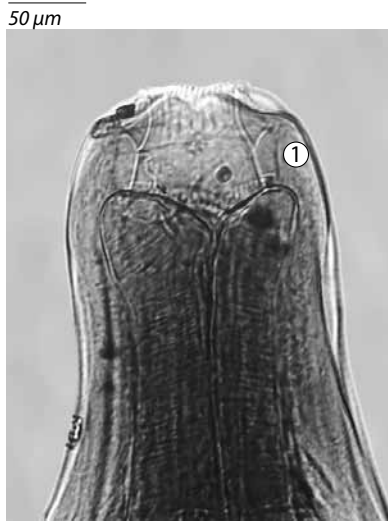


Figure 26a
Head
1. bean-like walls (lateral)

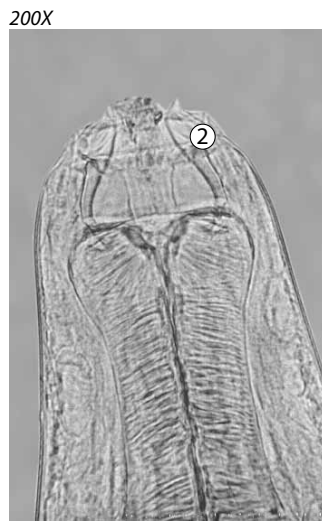


Figure 26b
Head
2. lyre-shaped walls (dorsoventral)



Figure 26c
Female tail

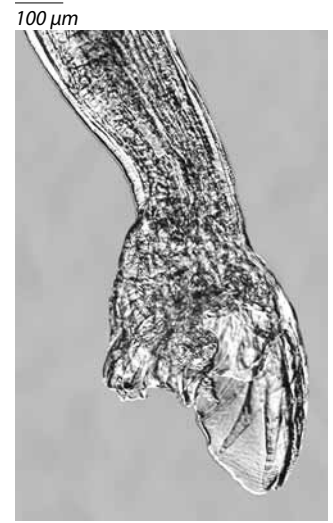


Figure 26d
Male tail

This species is very rare but easy to identify because the walls of its buccal capsule resemble a **lyre** when viewed dorsoventrally. **Laterally**, the walls are **bean-like**, but this view rarely presents itself. Identifying this species may require you to roll it by nudging the coverslip with a probe or a pair of tweezers until all views are seen.

The **female tail** is quite **long** and **tapered** compared to most other species. The male bursa is broad and “**cumbersome**” with a short dorsal ray.

Walls of the Buccal Capsule:

- resemble a lyre when viewed dorsoventrally
- laterally, they are bean-like (this view is rare)

Size: small
Preferred site: dorsal colon
Represents <1% of population

Parapoteriostomum spp.

Parapoteriostomum mettami
(formerly *Cylicodontophorus mettami*)

50 μ m (inset: 200X)

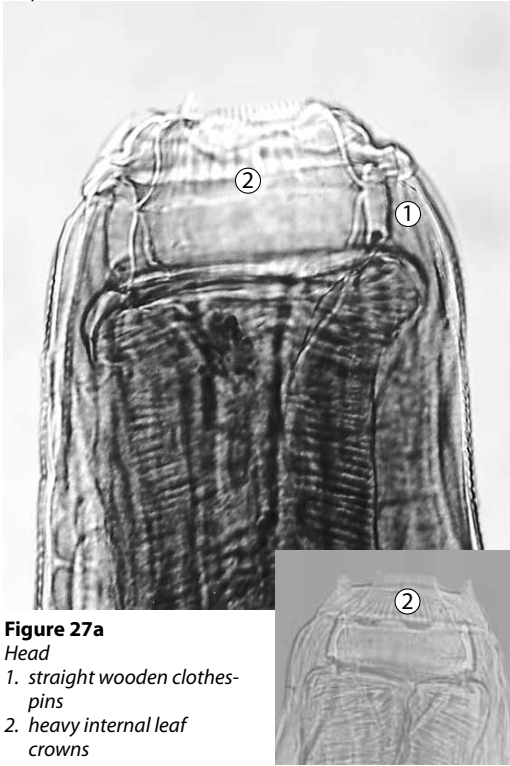


Figure 27a

Head

1. straight wooden clothespins
2. heavy internal leaf crowns

100 μ m



Figure 27b

Female tail

100 μ m

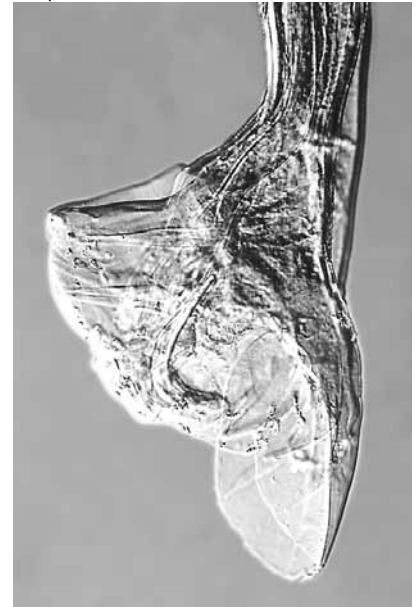


Figure 27c

Male tail

This is a **stout worm** with a **rectangular buccal capsule**. The walls of the capsule resemble old-fashioned **straight wooden clothespins** (slightly bowed). The leaves of the internal crown are very broad.

The female tail is quite ugly, lumpy on the end terminating in a spike, whereas the male tail, not so much a long dorsal ray, is quite extravagant in the way it is splayed out.

Walls of the Buccal Capsule:

- resemble old-fashioned straight wooden clothespins that are slightly bowed

Other Distinguishing Characteristics:

- has very broad leaves on the internal crown

Size: medium

Preferred site: dorsal colon

Represents <1% of population