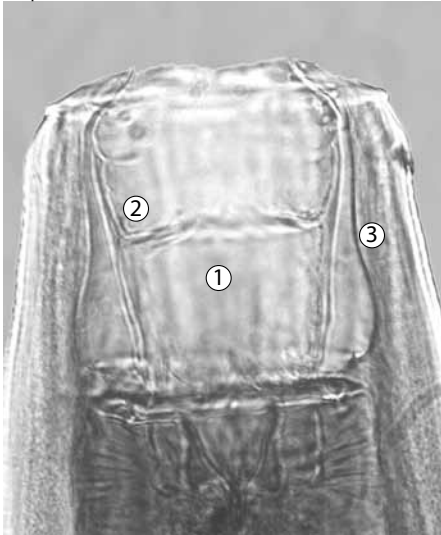


*Petrovinema* sp.

*Petrovinema (Pet.) poculatus*  
(formerly *Cylicostephanus poculatus*)

30  $\mu$ m



**Figure 28a**

Head

1. deep, square buccal capsule
2. ledge
3. dangling feet/legs of dead duck

50  $\mu$ m



**Figure 28b**

Head

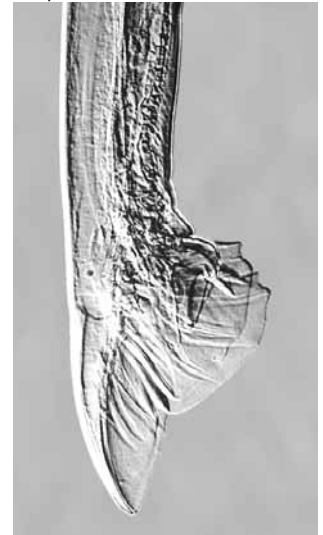
50  $\mu$ m



**Figure 28c**

Female tail

100  $\mu$ m



**Figure 28d**

Male tail

This species is one of the easiest to identify. It is a **small worm**, but has a **very large buccal capsule**, which is **almost a complete square**; if anything, it is a little deeper than wide. The walls are quite large at the base and taper sharply as they rise to the anterior end. They resemble the **dangling legs and feet of a dead duck**. Running horizontally near the middle of the capsule is a **conspicuous ledge or line**.

The female tail is very long and slender, but is **rounded** on the tip, **not ending in a sharp point**. The male tail has a dorsal ray that slightly curves back ventrally.

**Walls of the Buccal Capsule:**

- quite large at the base
- taper sharply as they rise to the anterior end
- resemble the dangling legs and feet of a dead duck

**Other Distinguishing Characteristics:**

- has a conspicuous ledge or line running horizontally near the middle of the capsule

Size: small

Preferred site: cecum

Represents <1% of population