

Craterostomum (Cra.) acuticaudatum

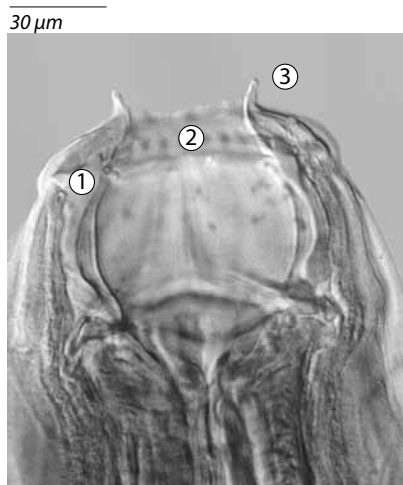


Figure 31a
Head
1. chitinous supports
2. gas burner
3. pair of horns

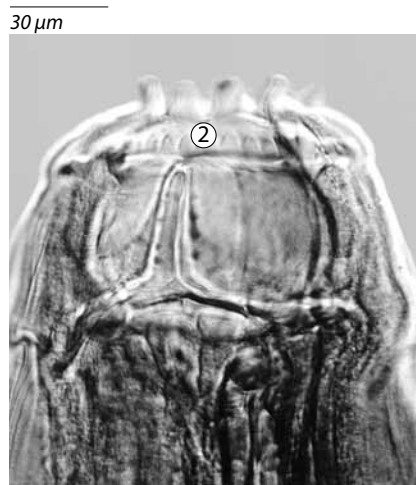


Figure 31b
Head
2. gas burner



Figure 31c
Female tail
4. sharply pointed



Figure 31d
Male tail

Craterostomum (Cra.) acuticaudatum and *Oesophagodontus (O.) robustus* (page 30) have been reclassified as large strongyles by Lichtenfels (1975) and Lichtenfels et al. (1998), mainly because of the shape of their buccal capsules.

Craterostomum acuticaudatum is a very small species and can be identified easily because no other species has a buccal capsule quite like it. The buccal capsule is round, but the top of the rounded cavity looks like **flames from a gas burner** or the **tips of a serrated comb** (these are broad leaves from the internal crown). Also, at the top of the round capsule, which is actually the base of the internal crown, there are **two chitinous supports**, one each extending to the left and right. At the buccal capsule opening are structures that **resemble a pair of horns**.

The **female tail** is very **long and thin** and finally ends in a **sharp point**. The male bursa is symmetrical, and the dorsal ray is of average length.

Distinguishing Characteristics:

- very small species
- unique round buccal capsule, the top of which looks like flames from a gas burner
- two chitinous supports
- structures resembling a pair of horns at the buccal capsule opening

Size: small
Preferred site: dorsal colon
Represents <1% of population